

Desert, Delta & Rivers Safari Superior

10 nights / 11 days

Starts Maun, Botswana / Ends Victoria Falls, Zimbabwe



From US\$ 4550 per person

P/Bag 0178, Maun, Botswana

Tel: +267 72311321 info@safarispecialists.net

Botswana is our home
Safaris are our passion



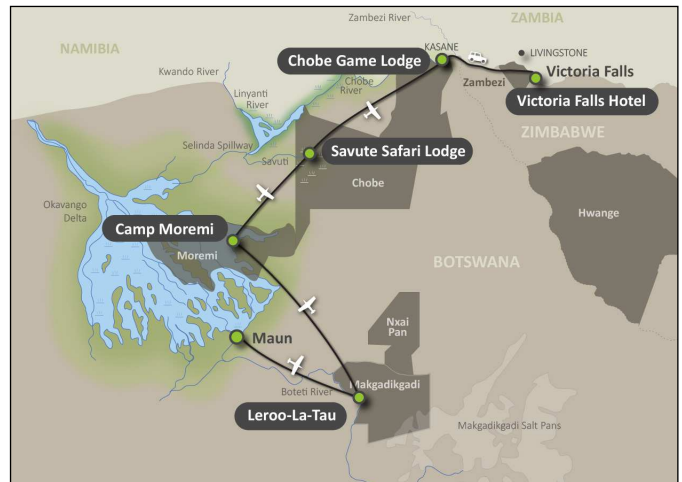
Day	Location	Accommodation	Transfers / Activities	Meals
1	Makgadikgadi Area, Boteti River	Leroo La Tau , Luxury Chalet	Arrive Maun eta TBA where you are met by Safari Air and Safari Specialists representatives. Connect to light aircraft flight to Leroo La Tau. Afternoon activity	L (time permitting) D & SB
2	Makgadikgadi Area, Boteti River	Leroo La Tau	Day/night Game Drives on the Boteti and game viewing hide, possible game drives into Makgadikgadi NP (depending on season)	B, L, D & SB
3	Moremi Game Reserve, Xakanaxa area	Camp Moremi , Luxury Safari Tent	Following morning activity (flight times permitting) transfer to airstrip for light aircraft flight to Xakanaxa airstrip and Camp Moremi for afternoon activity (time permitting)	B, L, D & SB
4	Moremi Game Reserve	Camp Moremi	Game drives and boating activities in Moremi Game Reserve	B, L, D & SB
5	Savute, Chobe National Park	Savute Safari Lodge , Luxury unit	Following breakfast and morning activity (flight times permitting) transfer to airstrip for light aircraft flight to Savute Safari Lodge for afternoon activity	B, L, D & SB
6	Savute, Chobe National Park	Savute Safari Lodge	Game drives within Savute area	B, L, D & SB
7	Chobe National Park	Chobe Game Lodge Luxury room	After breakfast and possible morning activity (flight times permitting), transfer to airstrip for light aircraft flight to Kasane Airport. Onward road transfer into Chobe National Park to Chobe Game Lodge. Afternoon game activity (time permitting)	B, L, D & SB
8	Chobe National Park	Chobe Game Lodge	Game drives in Chobe National Park & Chobe River cruise	B, L, D & SB
9	Victoria Falls, Zimbabwe	Victoria Falls Hotel Deluxe central wing	After breakfast and a possible morning activity, transfer by road into Zimbabwe to Victoria Falls Hotel. Afternoon at leisure	-
10	Victoria Falls Zimbabwe	Victoria Falls Hotel	Day of optional activities in Victoria Falls	B only
11	End of Arrangements	Ends Victoria Falls Airport	After breakfast, transfer to Victoria Falls Airport for onward own arrangements	B only

B=breakfast / L=lunch / D=dinner / SB=selected beverages

Highlights

- Game drives along Boteti River
- Game drives in Moremi Game Reserve
- Boating on Okavango Delta
- Game drives in Savute area of Chobe
- Game drive & boat cruises on the Chobe River/front
- Optional activities in Victoria Falls area

Please note: there is the option to replace Camp Moremi or Savute Safari Lodge with Xakanaxa Camp or Camp Okavango for same price. Our recommendation depends on the season and your personal activity preferences.



Cost of the safari 2015/2016

Season	Cost per person sharing	Single supplement*	Average nightly rate per person
November 2015	US \$ 5010 per person	US \$ 345	US \$ 501 per person per night
December 2015	US \$ 4550 per person	US \$ 370	US \$ 455 per person per night
January & March 2016 **	US \$ 4720 per person	US \$ 370	US \$ 472 per person per night
April – June 2016	US \$ 5450 per person	US \$ 370	US \$ 545 per person per night
July – October 2016	US \$ 7040 per person	US \$ 2040	US \$ 704 per person per night
November 2016	US \$ 5480 per person	US \$ 390	US \$ 548 per person per night

Please Note:

- The single surcharge covers accommodation only, additional surcharges on transfers may apply for solo travellers please apply for a personal quote. Contact us for the best option to suit.
- A single surcharge may be added during shoulder season (November 2015 – June 2016 and November 2016) if more than 2 singles are booked at selected camps.
- Please note that where a booking crosses over 2 different rate periods e.g. June & July, neither rate is applicable – please request a special quote
- The above rate is subject to change due to major currency fluctuations, increases in national park fees and fuel surcharges
- Subject to availability at the time of booking

Botswana Park Fees and Departure Taxes - Increase

Please be aware that the Botswana Park Fees and Airport Departure taxes may increase in 2016/2017. Regrettably such increases are beyond our control and are excluded from any bookings, provisional or confirmed. We will inform you should any increase be advised.



Travel for Impact – Responsible Travel

By booking this itinerary, you donate USD\$2 for every night of travel per person on the booking. Your donation goes to **Travel for Impact (TFI)** and ensures that your safari has a meaningful impact on the people who live locally. For more information on giving back to your chosen destination of travel, visit

www.travelforimpact.com

Safari Specialists – Desert Delta & Rivers Safari – Superior - 10 nights

Inclusions	Exclusions
<ul style="list-style-type: none"> • 2 nights Leroo La Tau, Boeti River Makgadikgadi area including all meals, selected beverages, laundry service and activities – game drives in Makgadikgadi National Park (seasonal) and along the Boteti River, hide game viewing and guided walks • 2 nights Camp Moremi, Moremi Game Reserve including all meals, selected beverages, laundry service and activities/ current corresponding park fees - game drives in Moremi Game Reserve and motorboating • 2 nights Savuti Safari Lodge, Savuti area of Chobe National Park including all meals, selected beverages, laundry service and activities/current corresponding park fees - game drives in Savute area of Chobe National Park • 2 nights Chobe Game Lodge, Chobe National Park including all meals, selected beverages, laundry service and activities/ current corresponding park fees - game drives in the Chobe River area of Chobe National Park, Chobe sunset cruise and game viewing by motorboat, birding • 2 nights Victoria Falls Hotel, Victoria Falls/Zimbabwe deluxe room in the central on bed and breakfast basis • Light Aircraft transfer Maun - Leroo La Tau - Camp Moremi – Savuti – Kasane Airport • Road transfer Kasane Airport – Chobe Game Lodge – across the border into Zimbabwe and Victoria Falls Hotel - Victoria Falls Airport 	<ul style="list-style-type: none"> • Increases in National Park Fees for 2016 • Any additional meals, additional transfers, laundry service and all beverages at Victoria Falls Hotel • Optional activities in Victoria Falls area • All extras/personal spending such as telephone calls/curio shopping/postage and so forth • International flights & taxes • Visas & Vaccinations • Premium imported wines, champagnes, spirits & liqueurs where drinks are included • All Travel Insurances • Errors and omissions

Detailed Itinerary:

Days 1 & 2: LEROO LA TAU, Boteti River, Makgadikgadi area (fully inclusive)

Travel time: Maun Airport – Leroo La Tau approx 40 minute flight

Upon arrival at Maun Airport you are met by a representative of Safari Specialists and Safari Air and escorted to the light aircraft flight down to the Makgadikgadi area where you connect by road out to Leroo La Tau Lodge for 2 nights on a fully inclusive basis.

Please note that the flight is booked on a 'seat rate' basis and therefore flight times are not scheduled until the day prior to flying, the lodge management will arrange your activities and transfers accordingly. Please note that there is a strict luggage restriction on all light aircraft flights of 15kg per person in soft bags, plus hand luggage.

Leroo La Tau Lodge is situated two hours drive east-south-east of Maun, built on the 25m high cliff of the Boteti River on the western boundary of the Makgadikgadi National Park, a luxury in the generally flat terrain in Botswana.



Accommodation is in twelve newly built chalets - each chalet is incredibly spacious with two beds, one double and the other single. The rooms have en-suite facilities that overlook the Boteti River. The chalets are spectacularly built at the edge of the escarpment and have glass sliding doors opening to a private deck affording incredible views. The main lodge area at Leroo La Tau is built out of natural wood, brick and thatch, housing the lounge, bar, dining room, reception area and curio shop.

Safari Specialists – Desert Delta & Rivers Safari – Superior - 10 nights

The Boteti River is one of the far reaches of the Okavango Delta as it filters into the Kalahari Sands. It has not flowed strongly since 1995 but thanks to high floods seeping down the river system in 2009, the Boteti River is flowing once again. The park, populated by up to 30,000 zebra and wildebeest closely accompanied by predators, offers guests the chance to experience the exhilaration of seeing large concentrations of game and the resultant predator interaction.

Having explored the area and enjoyed a spectacular wildlife phenomenon on guided day and night game drives, guests can retire after dinner to a splendid fireplace overlooking the river. The lodge also offers a raised hide above the river where guests can enjoy the spectacular wildlife sightings that we've come to expect in this part of Botswana. The formerly dry riverbed is a major route of the zebra and wildebeest migration (June-November) and outside of the migratory time of the year, for those staying several nights, activities may include a day trip to Makgadikgadi or Nxai Pan National Park.

AREA DESCRIPTION - MAKGADIKGADI NATIONAL PARK & BOTETI AREA

Although this area was also once part of the great superlake, it is quite different in character to the Makgadikgadi Salt Pans. To the west of Nwetwe Pan lies open grassland which is home to a wide range of animals as it incorporates both desert and riverine habitats. The grasslands give rise to a dense riverine forest on the banks of the Boteti River. During periods of above average rainfall, the Boteti River is one of the few drainage systems that carry the Okavango floodwaters out of the delta into the Kalahari Desert. The Boteti River lies right in the middle of these great vast thirst lands where water is priceless thus attracting some of Africa's last remaining great wildlife populations.

From the Kalahari side on the open plains you may see hartebeest, gemsbok and springbok as well as lion, cheetah, kudu, giraffe, zebra and wildebeest amongst others. The timing of your visit is significant as the seasonal movement of wildlife varies throughout the year. Following the annual summer rains from November to April, wildlife tends to disperse away from permanent surface water, moving to richer pastures in the Kalahari where rain-filled pans sustain them during the peak breeding season. The Makgadikgadi becomes the summer headquarters for thousands of zebra and blue wildebeest. However during the dry winter months after the outlying pans have dried up, the main herds of elephant, zebra and wildebeest (and their accompanying predators) are found in the corridor of the Boteti River.

Days 3 & 4: CAMP MOREMI, Moremi Game Reserve (fully inclusive)

Travel time: Leroo La Tau – Camp Moremi approx 70 minute flight

After breakfast you are transferred by light aircraft up to the Xakanaxa area of Moremi Game Reserve where you spend 2 nights at Camp Moremi on a fully inclusive basis. Camp Moremi is situated on the picturesque Xakanaxa Lagoon in the eastern extremity of the Okavango Delta, within the Moremi Game Reserve. The area is a wildlife haven with incredible game viewing opportunities year round.



Camp Moremi accommodates twenty two safari guests in beautifully furnished East African style safari tents with private facilities, each tent with a private deck. The elevated Moremi Tree Lodge is the central point of the camp and houses the luxurious main lounge, a wildlife reference library, dining room and cocktail bar, shaded by giant Ebony trees and overlooking the Okavango Delta's Xakanaxa Lagoon. Facilities in the camp include a curio shop, swimming pool, shaded boma and elevated observation platform.

Activities offered are game drives in open safari vehicles exploring the diverse range of habitats within the reserve – from open floodplains to belts of mopane woodland. Guests can also venture out onto the open waters of the Okavango by motorboat, visiting the Xakanaxa Lagoon and beyond up to the seasonal heronry at Gadikwe. Moremi Game Reserve offers some of the most spectacular game viewing in Botswana and guests may encounter breeding herds of elephant, a hunting lioness or a sleeping pride of lion, grazing impala and kudu and much more.

AREA DESCRIPTION - MOREMI GAME RESERVE

Moremi Game Reserve is a rich and diverse wildlife sanctuary, encompassing the Okavango Delta. The reserve is unfenced and its boundaries are defined naturally by river systems. The vegetation is varied, with dry land complemented by permanent and seasonal swamplands, resulting in an excellent diversity of both wildlife and birdlife. There is a network of game drive routes through the reserve as well as access to the permanent delta waterways in Xakanaxa where boating can be enjoyed (not available from lodges in the Khwai area).

Moremi is amongst the best game reserves in Africa for viewing the endangered African wild dog. Xakanaxa is home to a resident herd of several hundred buffalo whose range covers the territories of at least 4 prides of lion which may often be seen flanking the ever moving herd. Breeding herds of elephant move between their browsing areas in the mopane forests and the fresh water of the Okavango. Red lechwe are one of the more unusual antelope species commonly found here. Game is more concentrated around the permanent water during the dry season (Apr - Oct) with it becoming very hot in the later months.

The heronries become active as the migrant birds return to Botswana from September through November, and general bird watching is excellent throughout the summer months. The rainy season (Nov - Apr) invigorates the lush scenery with wild flowers, dramatic thundershowers, spectacular sunsets and the birthing season brings great predator and prey interaction.

Please note that activities are restricted within the national park in accordance with government rules and regulations. These include no driving off-road, no walking and no driving after dark.

Days 5 & 6: SAVUTE SAFARI LODGE, Savute area of Chobe National Park (fully inclusive)

Travel time: Camp Moremi – Savute Safari Lodge approx 40 min flight

After breakfast and a possible morning activity (flight times permitting) you enjoy a scenic drive out of the park to the Airstrip where you connect with a light aircraft to Savuti airstrip. After a short transfer to camp you settle in for a 2 night stay on a fully inclusive basis.

In the heart of Chobe National Park, Savuti Safari Lodge peers out from ancient Camel thorn trees on the shore of the Savute channel, Botswana's fabled 'stolen river' which dried out for over 20 years, but now flows once again. The Savute channel forms part of the dynamic Savute eco system renowned for its large concentration of elephant and lion and their extraordinary relationship.



The lodge has twelve tastefully furnished twin bedded suites, with spacious interiors offering a lounge area, en-suite bathrooms, private decks and large glass sliding doors and windows, which distinguishes the lodge from typical tented safari accommodation.

The lounge, library and cocktail bar are situated in the thatch and timber main building up at the entrance to the camp. You walk through a developed shady garden, to the pool area and lower deck with a large viewing deck overlooking the channel as well as a outdoor dining area and swimming pool.

Activities focus on game drives in open 4x4 safari vehicles in the Savute area including the Savute Marsh and the ancient San rock paintings at Gubatsa Hills. As the Savute Channel is now flowing again after many dry years, the area is revived and wildlife exceptional throughout most of the year. In the dry winter months up to the beginning of the summer rains, the Savute Channel is a haven to a large elephant population. In addition leopard is regularly sighted in the area.

The summer rains in Savute bring a fresh feast for lion, hyena and cheetah as thousands of migrating zebra and wildebeest arrive for the fresh, rich grasslands of the Savute Marsh. Being situated in the National Park, no night activities are permitted, with the afternoon drive returning just after sunset.

SAVUTE, CHOBE NATIONAL PARK

Historically the Savute channel has been an enigma that flows erratically and the area is currently in a period of transition at the start of what appears to be another 'wet cycle'. The channel began flowing again in 2009 for the first time in nearly 30 years, the last active period being from 1950-1981. Water levels are not consistent and at certain times of year the channel disappears, before the Linyanti once again filters through.

The Savute area offers a harsh and desert-like landscape in the dry season when the wildlife is supported by the now flowing Savute channel. This contrasts dramatically with the rainy season where the seasonal pans fill with water and the Savute Marsh and surrounds are covered with lush green vegetation that attracts an annual migration of zebra and wildebeest, as well as an abundance of birdlife. Unlike the vast majority of the country, Savute is not a totally flat landscape: large outcrops of volcanic rock reach up out of the Kalahari sands towering over the endless savannah. These hills provide a habitat for a completely different array of small wildlife, birds and plants. The sand ridge, Goha Hills, and the dead trees on the Savute Marsh, offer some spectacular photographic opportunities. The Savute Marsh has been the stage for many of the most dramatic wildlife documentaries in Africa. The wide open country, good ungulate populations and until recently was the hunting ground for Botswana's strongest pride of lions – which has split/separated in recent years, yet lion sightings of the smaller prides are still common in the area. The marsh is prime cheetah country and it is not unusual to see wild dog hunting in the Savute in the wet season.

Please note that activities are restricted within the national park in accordance with government rules and regulations: these include no driving off-road, no walking and no driving after dark.

Days 7 & 8: CHOBE GAME LODGE, Chobe National Park (fully inclusive)

**Travel time: Savute Safari Lodge – Chobe Game Lodge
Approx 40 min flight and 20 min road**

After breakfast and a possible morning activity (flight times permitting) you transfer to Savute Airstrip for the light aircraft transfer up to Kasane Airport, where you are met by a representative from Chobe Game Lodge for onwards transfer in an open safari vehicle into Chobe National Park through to the lodge with game viewing along the way!

Chobe Game Lodge is the only permanent lodge situated on the Chobe River inside Chobe National Park with spectacular views of the Chobe River and floodplains.



Chobe Game Lodge has embarked on extensive renovations that will run for the remainder of 2015/early 2016 as they extend and rebuild the bathrooms in every room as well as extensive decor refurbishments. So far the new bathrooms are looking stunning and the renovations are structured in a way to have very little impact on the guests staying at the lodge.

Guests are accommodated in a relaxed and luxurious environment in tune with a timeless Africa. Chobe Game Lodge has forty seven rooms (including five suites and a family room) which are river facing, offering air conditioning and overhead fans, a complimentary mini bar, en-suite bathrooms as well as tea and coffee making facilities. All rooms have a private terrace looking towards the river and there are several inter-leading rooms that suit families in addition to the actual family room. The suites are situated on the upper floor and have additional features including a lounge area and private plunge pool.

The main building of the hotel houses a myriad of small lounges where one can always find your own space. The boardwalk running along the river front provides a front row seat from which to enjoy a parade of wildlife on the Chobe River and flood plains. Dining is enjoyed in the main terrace restaurant as well as in various locations to suit individuals or groups.

Other facilities at the lodge include a large swimming pool with terrace, a riverside boma area, wifi throughout the main area (currently not in the rooms) and an internet lounge, gym, spa treatment room, stylish bar with an outside terrace overlooking the Chobe River and a cigar bar with a champion sized billiard table. Your days will be spent exploring the Chobe National Park in open safari 4X4 safari vehicles led by Professional Guides – the 'Chobe Angels', and you will also enjoy cruises along the Chobe River, with the sunset cruise being the most spectacular time of the day.

Safari Specialists – Desert Delta & Rivers Safari – Superior - 10 nights

The Chobe National Park is famous for having the highest density of elephants in the world and you will often see large herds congregating along the River. It is also home to a high buffalo and lion population which can provide dramatic game viewing. In addition to a variety of predators, there is an abundance of wild game and bird life which decorate these beautiful waterways.

AREA DESCRIPTION – CHOBE

The Chobe River Front is a remarkable wildlife area due to the permanent water source of the Chobe River. However its accessibility from Kasane and neighbouring towns of Victoria Falls and Livingstone has created quite a busy tourist area with larger hotels and lodges than you find in the more remote Okavango Delta.

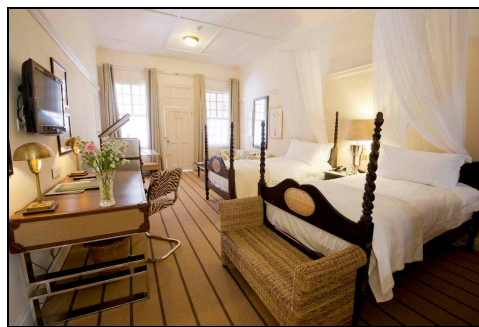
The spectacle of all the animals coming to drink and frolic at the water's edge is one to behold, particularly in the dry season (May - Oct) where water is scarce away from the river. It is an area famous for its abundance of elephants, a variety of predators and, in addition, you are likely to see herds of buffalo and possibly even roan and sable antelope. In the rainy season (Nov - Apr) the game is much less concentrated at the river as the wildlife spread throughout the greater area of Chobe National Park due to availability of surface water from nearby pans. This assists the vegetation on the river banks in recovering from the massive herds that are attracted to the area in the dry months. The summer rains bring beautiful wild flowers, exquisite scenery, impressive bird life and an abundance of young animals usually born around November/December. The spectacular Chobe sunsets alone are worth a visit to the area. Please note that activities are restricted within the national park in accordance with government rules and regulations: these include no driving off-road, no walking and no driving after dark.

Days 9 & 10: VICTORIA FALLS HOTEL, Victoria Falls, Zimbabwe (bed and breakfast)

Travel time: Chobe Game Lodge – Victoria Falls Hotel approx 2 hours road with border formalities

After breakfast you will transfer out of Chobe National Park to Kasane Airport with Chobe Game Lodge to meet a local representative and continue out by road to the Kazungula Botswana border across to Zimbabwe to the Victoria Falls Hotel where you are booked for 2 nights in a deluxe room in the central wing on a bed and breakfast basis.

Established in 1904, the Victoria Falls Hotel, popularly known as “the grand old lady of the Falls”, is set in the Victoria Falls National Park with a private path to the Victoria Falls. Overlooking the Victoria Falls Bridge and gorge, it is one of the most famous hotels in Africa and is renowned for its elegance and charm. Victoria Falls Hotel, is renowned for its cocktails and afternoon tea and has been a rendezvous for adventurers in Africa for over a century.



The suites and rooms are well appointed, cool and comfortable and are furnished in traditional Edwardian style with every modern amenity including air conditioning, satellite television, mini-bars in suites, complimentary early morning tea/coffee, direct dial telephone, personal safe, 24-hour room service, bathrobes, hairdryer, and umbrellas for guests' personal use. The standard rooms are comfortable with views to the back garden or courtyard. The deluxe rooms are slightly larger and have a better view –either of the front lawns/courtyard or across the Batoka Gorge or Victoria Falls bridge.

A large swimming pool, two tennis courts, a library, reading rooms and chapel are part of the complex and the rolling lawns beyond Stanley's Terrace offer a clear view of Victoria Falls Bridge across to Zambia. The hotel features two restaurants providing guests with a choice, the opulent Livingstone Room offering fine dining and dancing as well as the Jungle Junction with breakfast and dinner buffets and ethnic entertainment in the evenings.

All activities are optional and can be pre-booked in advance or arranged direct with the hotel's booking desk or one of the many activity operators in town. Victoria Falls offers a multitude of activities to suit every traveller. Some of the most popular are elephant back safaris, exploring the local craft market for African treasures and taking a helicopter flight over the magnificent Victoria Falls for a bird's eye view, guided walking safaris and game drives in Victoria Falls National Park.

AREA DESCRIPTION – VICTORIA FALLS

Victoria Falls town lies on the southern bank of the Zambezi River at the eastern end of the Victoria Falls. It is a lovely tourist town which is easy to explore on foot and which offers a wide range of activities from the challenge of white water rafting and bungi jumping, to the awe-inspiring elephant back safaris and sunset cruises. It has something for everyone. The Victoria Falls are one of the Seven Wonders of the World and is the largest sheet of falling water on earth - a spellbinding and mesmerising spectacle. The sheer mass of water cascading down the 100m drop across nearly 2km makes a thunderous roar and creates a magnificent spray of water that can be seen for miles - hence the local name 'mosi oa tunya' meaning 'the smoke that thunders'. Access to Victoria Falls is within easy walking distance from the town centre. Water flow over the falls varies throughout the year. The river's annual flood season is February to May when the spray can reach a height of over 400m, this is spectacular from above but it makes it very difficult to see the falls at ground level as it is under a heavy shower/mist. Water levels start dropping in August and are at their lowest October - December when much of the rocky face becomes dry. At times of low water, the falls are best viewed from the Zimbabwe side, by helicopter on the 'flight of angels' or from Livingstone Island (Zambian side).

DAY 11: SAFARI ENDS VICTORIA FALLS AIRPORT

**Travel time: Victoria Falls Hotel – Victoria Falls Airport
approx 20 min road**

Following breakfast at a morning at leisure you will road transfer to Victoria Falls Airport for own onwards flight arrangements.

Special Notes:

Shared Transfers and Activities

Road, boat, air transfers and activities are quoted on a seat basis (on a shared basis and NOT private) unless otherwise requested or specified. Private charters/transfers can however be requested at an additional cost. Passengers may have various stops en-route to a destination adding to the duration of the transfer. International flight connections are accounted for in the daily schedules.

On shared transfers all the flight times are arranged a day before travel to avoid endless schedule changes. The transfer or charter company reserves the right to specify departure and arrival times.

Weight and Luggage restrictions

Please advise upon requesting a quotation where a traveller **weighs over 100kg**, as well as at time of confirming the booking, as it may be necessary to cost in an additional seat on internal flights for the passenger's safety and comfort.

Luggage is restricted on flight transfers to **20kg per person in soft bags**, which includes all hand luggage and camera equipment. Please refer to your itinerary notes, as in some instances, and in some countries, such as Zambia and Zimbabwe this limitation is decreased to 15kg per person. Please note that luggage in excess of the above restrictions shall result in additional costs for transport and/or storage and should be arranged in advance. Note that laundry can be done on a daily basis at most camps and lodges.

Health

Please confirm that all Clients are medically fit, in good physical and mental health and that there is nothing which renders him/her unfit to undertake the tour at the time of booking. Any Client with a pre-existing medical condition or illness must declare the true nature of such conditions to the Company before the commencement of the tour. The Client is responsible for attending to any medical condition which he/she may have and must consult with his/her physician in respect of all medical conditions which might be affected by his/her participation in the tour, activities or associated activities.

The Client accepts that certain areas included in the tour are malaria-infected areas and that he/she should take reasonable anti-malaria precautions.

Insurance

Travel, cancellation and health insurance are highly recommended for all Clients.

Visas/Passports/Travel Documents

The Client is solely responsible to ensure that his/her passports, visas, insurance cover and vaccination certificates, (and any other travel documents and/or requirements of any nature whatsoever) are valid for the duration of the tour and in the countries to be visited.

Safari Specialists – Desert Delta & Rivers Safari – Superior - 10 nights

Arrival and Departure Details

It is imperative that we have the correct International/Regional arrival and departure details for the clients in order to plan the itinerary and ensure efficient onward transfers. Costs may be incurred if these details are not given on quotation, or if they change subsequently.

TERMS AND CONDITIONS

We require that you have read and understood our full **SAFARI INFORMATION** and **TERMS AND CONDITIONS** before confirming the itinerary and commencing the safari. However we would like to highlight the following important notes.

EXCLUSION OF LIABILITY

In terms of the trading conditions, and any contract(s) concluded pursuant hereto, the Company acts as a booking agent only, for and on behalf of the Client in procuring services. The Company utilizes the products of various travel Subcontractors. The Company does not provide any direct services to the Clients as its services are limited to procuring and compiling tour packages for its clients.

While the Company makes every effort:

- to engage quality Subcontractors among the airlines, hotels, tour operators and other service providers to constitute the itinerary of the tour; and
- to ensure that the various services that constitutes the tour package will be carried out efficiently and as advertised;

it does not have direct control over the provision of services by Subcontractors and shall not be liable for *inter alia* any loss, damage, injury, additional costs, delay or irregularity that may be occasioned by an error or default, act or omission of any Subcontractor in carrying out the logistics of the tour package, or associated activities.

Payment Terms

Bookings must be confirmed in writing by fax, email and/or registered letter and the deposit payment must be received before the Company can confirm in full to all subcontractors. Once the deposit is received and the booking is confirmed, all terms and conditions apply and our cancellation policies will be in immediate effect.

By confirmation of the booking, the Client acknowledges that all terms and conditions of the Company have been provided and accepted.

The full amount of the tour is payable not less than 60 days prior to the date when the tour commences.

In the event that a booking is not paid in full as per the above payment terms the Company reserves the right to refuse the Client(s) participation in the tour, and the client will be liable for any applicable cancellation fees.

CANCELLATIONS

All cancellations should be made in writing and will only be deemed effective upon acknowledgment of receipt by the Company.

Cancellations will be subject to the following penalties:

- 20% of the total booking fee shall be payable immediately upon confirmation.
- 50% of the total booking 45 - 90 days prior to commencement of the tour.
- 100% of the total booking 44 days or less prior to the commencement of the tour.

Standard Cancellation fees shall apply in instances of postponed departure dates.

RESERVATIONS

Please be advised that for any quotes, no provisional bookings have been made unless otherwise specified by your consultant. Accommodation is subject to availability at the time of the booking.

Costs quoted are subject to change at any time due to *inter alia* excessive exchange fluctuations, fuel costs, taxes, levies, government regulations, rate of exchange, and factors that are imposed upon us by our suppliers and government that are beyond our control.

Provisional bookings will be held for a period of 12 days (unless otherwise advised), where after confirmation of the booking and payment of a 20% non-refundable deposit will be required to secure the booking, failing which the booking will be cancelled.

Safari Specialists – Desert Delta & Rivers Safari – Superior - 10 nights

Clients are to advise the Company at the time of requesting a quotation, and of making a booking, of the ages of all children (under the age of 21 and as at the time of travel) that will be participating in the tour, together with their date of birth, as not all lodges accept children, and there may be restrictions or conditions applicable. Some properties will require that children under the age of 18 share with an adult.

It is recommended that optional additional activities should be requested at the time of requesting a quotation and/or making the booking, specifically in Livingstone or Victoria Falls e.g. sunset cruise, to guarantee availability of such activities.

All Clients should allow a minimum 2 - 3 hours connection time in Johannesburg for international flights. Please ask your consultant to check your flight details before booking.

With confirmation of the booking the Client accepts that the tour carries inherent risks, and that the Clients voluntarily assume all risks, which are associated with the tour. All Clients will be required to sign indemnities at the various camps/lodges/service providers, and abide by the Operators Code of Conduct in order to ensure their safety.

On confirmation of a booking, the Company requires personal information with respect to each and every Client e.g. Medical Conditions, Dietary requirements, Travel Insurance details and Emergency contact details. Please complete the Booking form on confirmation of a booking. By choosing not to complete and submit this information to the Company the Client will compromise the Company's response time in the event of an emergency.

With confirmation of the booking the Client confirms that he has read, understood and accepted the terms and conditions of the Company and its Subcontractors.